

WEYMOUTH &
THE JURASSIC COAST

bus guide


SUMMER 2024 from 12 May

TIMES

MAPS

PLACES TO GO





WELCOME to this handy guide to our bus services in and around Weymouth, to and from Dorchester and out along the Jurassic Coast.

Our buses are smart and comfortable, and thoroughly cleaned every day, as you'd expect.

So whether you're just taking a short hop into town or heading off for a fantastic day out on one of our Coaster buses, we look forward to welcoming you on board soon.

If you need any help or more information, get in touch - details are on the back page.





bay watch

open-top
X50 buses
every two hours
from Weymouth and
Wool Station to Swanage
all summer long

JURASSIC COASTER

PORTLAND COASTER

1 to Isle of Portland

X52 to Bridport
X53 to Bridport & Axminster

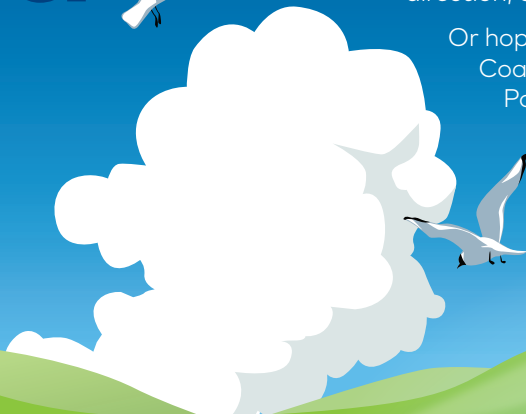
X50 to Durdle Door
Lulworth Cove
Tank Museum
Monkey World
Wool
Wareham
Corfe Castle
Swanage

X54 to Durdle Door
Lulworth Cove
Wool
Wareham

get out & discover

with
Wessex

from **First**



there's no better way to see this glorious landscape



There are so many great places to go and things to do, all just an easy bus ride away.

The famous Jurassic Coaster buses will take you out to Abbotsbury, Bridport and Lyme Regis in one direction, or to Lulworth Cove the other way.

Or hop on our open-top Portland Coaster for a grandstand ride up to Portland Bill, where the views will take your breath away.



 **First Dorset**

 **@firstdorset**

 **First Bus app**

for best prices, journey planning
& live departure times



pay contactless
up to £45

routes, times & fares

firstbus.co.uk/wessex



unlimited travel
on all Wessex, Jurassic Coaster
& Portland Coaster buses

1 day **7** days

adult £13 £27
 on bus

under 16 £6.50 £18.50
 on bus

any 5 together £25 £60



Buy on the app or pay the driver.

pay contactless
£45 limit applies

£2 any one-way ride



where to catch your
10 & X51 buses in
Dorchester
town centre

school term dates

On the timetable pages, school day journeys are shaded in light pink, and school holiday buses are in light blue.

Summer term 15 April to 23 July
half term holiday 27 to 31 May

SUMMER HOLIDAY 24 JULY TO 30 AUGUST

Autumn term 2 September to 20 December
half term holiday 28 October to 1 November

timetables & route maps

ROUTE
PAGE

Weymouth town & local services		
Portland	1	8
Littlemoor	2	16
Westham & Southill	3	23
Preston	4	24
Bridport Beaminster Yeovil	CR6	30
Chickerell	8	35
Poundbury Dorchester Weymouth	10	38

Portland Coaster to **Portland Bill** 46

Weymouth holiday park services		
Littlesea	12	48
Bowleaze Cove	13	

Jurassic Coaster services		
towards Dorchester Bridport	X51	52
Lyme Regis Axminster	X52	
	X53	

towards	X50	70
Bovington Tank Museum Monkey World		
Swanage via Lulworth Cove & Wool, Corfe Castle & Swanage	X54	70



where to catch your bus in Weymouth town centre

towards

bus stops

1	Portland	K4 B L
2	Littlemoor	K2 M
4	Overcombe & Preston	K1 M
8	Chickerell	C D1 L T1
10	Dorchester & Poundbury	K3 M
<i>sunseeker</i>	12 Littlesea Holiday Park	K7 J
<i>sunseeker</i>	13 Bowleaze Cove Holiday Park	K8 M
X50	Lulworth Cove, Durdle Door & Swanage	K5 M
X51	Dorchester & Axminster	K6 M
X52	Bridport	K6 J
X53	Bridport & Axminster	K6 J
X54	Wareham	K5 M
	Portland Bill	K6 C D3 L T1





PORTLAND
COASTER timetables
on pp. 46-47

Portland Lighthouse

Portland Bill Lighthouse is 135ft (41 metres) tall. Finished in 1906, it replaced two earlier lighthouses built in 1716, and first shone out on 11 January 1906.

The lighthouse guides passing vessels through the hazardous waters surrounding the Bill.



Portland Stone

Quarried on the Isle of Portland since Roman times,

Portland Stone has been used extensively as a building stone throughout the British Isles, notably in major public buildings in London, such as St Paul's Cathedral, Buckingham Palace and for the Cenotaph in Whitehall.

towards **Portland****Mondays to Fridays** except public holidays

Weymouth King's Statue	0456	0516	0536	0550	0604	0618	0632	0646	0700	0715	0728	0742	0756	0810	0826	0842	0858	0914	0930	0946	1002	1018	1034
Weymouth rail station	0456	0516	0536	0550	0604	0618	0632	0646	0700	0716	0729	0743	0757	0811	0827	0843	0859	0915	0931	0947	1003	1019	1035
Wyke Regis Foords Corner	0502	0522	0542	0556	0611	0625	0639	0653	0707	0723	0736	0750	0804	0819	0835	0851	0907	0922	0938	0954	1011	1027	1043
Portland Victoria Square	0509	0530	0550	0604	0619	0633	0647	0701	0715	0732	0745	0759	0813	0830	0846	0902	0918	0933	0949	1005	1022	1038	1054
Easton Square	0515	0536	0556	0610	0627	0641	0655	0709	0723	0740	0753	0807	0821	0838	0854	0910	0926	0941	0957	1013	1031	1047	1103
Portland Rip Croft	0520	0540	0600	0614	0633	0647	0701	0715	0729	0746	0759	0813	0827	0844	0900	0916	0932	0948	1004	1020	1038	1054	1110

Weymouth King's Statue	1050	1106	1122	1136	1150	1204	1218	1232	1246	1301	1315	1329	1343	1358	1412	1426	1441	1457	1513	1527	1542	1558	1614
Weymouth rail station	1051	1107	1123	1137	1151	1205	1219	1233	1247	1302	1316	1330	1344	1359	1413	1427	1442	1458	1514	1528	1543	1559	1615
Wyke Regis Foords Corner	1059	1116	1132	1146	1200	1215	1229	1243	1257	1312	1326	1340	1354	1409	1425	1439	1454	1510	1529	1543	1558	1614	1629
Portland Victoria Square	1110	1128	1144	1158	1212	1226	1240	1254	1308	1323	1337	1351	1405	1420	1436	1450	1505	1521	1542	1556	1611	1627	1641
Easton Square	1119	1136	1152	1206	1220	1235	1249	1303	1317	1331	1345	1359	1413	1428	1445	1459	1514	1530	1551	1605	1620	1636	1650
Portland Rip Croft	1126	1144	1200	1214	1228	1243	1257	1311	1325	1339	1353	1407	1421	1436	1454	1508	1523	1539	1559	1613	1628	1644	1658

Weymouth King's Statue	1630	1646	1702	1713	1719	1736	1754	1812	1832	1854	1920	1950	2022	2052	2122	2152	2222	2252	2322				
Weymouth rail station	1631	1647	1703	1714	1720	1737	1755	1813	1833	1855	1921	1951	2023	2053	2123	2153	2223	2253	2323				
Wyke Regis Foords Corner	1645	1701	1716	1722	1733	1750	1808	1822	1842	1904	1929	1959	2031	2101	2130	2200	2230	2300	2330				
Portland Victoria Square	1657	1713	1728	1737	1745	1802	1820	1833	1853	1915	1938	2008	2040	2110	2140	2210	2239	2309	2339				
Easton Square	1706	1722	1736	1745	1753	1810	1828	1841	1901	1923	1946	2016	2048	2118	2148	2218	2247	2317	2347				
Portland Rip Croft	1714	1730	1744	1751	1801	1818	1836	1848	1908	1930	1953	2023	2055	2125	2155	2225	2254	2324	2354				

▶ on college days
this bus starts
from Weymouth
College at 1705

Saturdays

Weymouth King's Statue	0500	0528	0601	0631	0657	0715	0732	0751	0811	0827	0844	0901	0917	0936	0951	1006	1023	1039	1054	1111	1128	1145	1200
Weymouth rail station	0500	0528	0601	0631	0657	0715	0732	0751	0812	0828	0845	0902	0918	0937	0952	1007	1024	1040	1055	1112	1129	1146	1201
Wyke Regis Foords Corner	0507	0535	0608	0638	0704	0722	0739	0758	0818	0834	0851	0908	0925	0944	0959	1016	1033	1049	1104	1122	1139	1156	1211
Portland Victoria Square	0514	0542	0616	0646	0712	0731	0748	0807	0827	0843	0900	0917	0935	0954	1009	1026	1043	1059	1114	1133	1150	1207	1222
Easton Square	0521	0549	0622	0652	0718	0738	0755	0814	0834	0850	0907	0924	0943	1002	1017	1035	1052	1108	1123	1141	1158	1215	1230
Portland Rip Croft	0527	0555	0628	0658	0724	0744	0801	0820	0841	0857	0914	0931	0950	1009	1024	1043	1100	1116	1131	1149	1206	1223	1238

Weymouth King's Statue	1216	1233	1250	1305	1322	1339	1356	1413	1430	1445	1500	1517	1534	1551	1607	1624	1641	1656	1711	1728	1750	1812	1832
Weymouth rail station	1217	1234	1251	1307	1324	1341	1358	1415	1432	1447	1502	1519	1536	1553	1608	1625	1642	1657	1712	1729	1751	1813	1833
Wyke Regis Foords Corner	1228	1245	1302	1317	1334	1351	1408	1425	1442	1457	1512	1529	1546	1603	1619	1636	1653	1708	1723	1740	1802	1822	1842
Portland Victoria Square	1239	1256	1313	1328	1345	1402	1419	1436	1453	1508	1523	1540	1557	1614	1630	1647	1704	1719	1734	1751	1813	1833	1853
Easton Square	1247	1304	1321	1336	1353	1410	1427	1444	1501	1516	1531	1548	1605	1622	1638	1655	1712	1727	1742	1759	1821	1841	1901
Portland Rip Croft	1255	1312	1329	1344	1401	1418	1435	1452	1509	1524	1539	1557	1614	1631	1646	1703	1720	1735	1750	1807	1829	1849	1909

Weymouth King's Statue	1854	1916	1936	1955	2022	2052	2122	2152	2222	2252	2322												
Weymouth rail station	1855	1917	1937	1956	2023	2053	2123	2153	2223	2253	2323												
Wyke Regis Foords Corner	1904	1925	1945	2004	2031	2101	2131	2201	2231	2301	2331												
Portland Victoria Square	1915	1935	1955	2014	2041	2111	2140	2210	2240	2310	2340												
Easton Square	1923	1943	2003	2022	2049	2119	2149	2219	2248	2318	2348												
Portland Rip Croft	1931	1952	2012	2031	2056	2126	2156	2226	2256	2326	2355												

see page 14 for Sunday journeys

towards **Weymouth****Mondays to Fridays** except public holidays

Portland Rip Croft	0525	0545	0605	0620	0638	0652	0706	0720	0734	0752	0804	0819	0832	0850	0906	0922	0938	0954	1010	1026	1040	1054	1104
Easton Square	0533	0553	0613	0628	0646	0700	0714	0730	0744	0802	0814	0828	0841	0859	0916	0932	0948	1004	1020	1036	1050	1104	1114
Portland Victoria Square	0539	0559	0619	0635	0653	0707	0721	0738	0752	0810	0822	0836	0849	0907	0925	0941	0957	1013	1030	1046	1100	1114	1124
Wyke Regis Foords Corner	0547	0607	0627	0644	0702	0716	0730	0750	0804	0822	0834	0849	0902	0920	0937	0953	1009	1025	1042	1058	1112	1126	1136
Commercial Rd bus depot	0553	0613	0633	0652	0710	0724	0738	0802	0816	0834	0846	0902	0915	0933	0951	1007	1023	1039	1055	1111	1125	1139	1149
Weymouth King's Statue	0555	0615	0635	0655	0713	0727	0741	0805	0819	0837	0849	0906	0919	0937	0955	1011	1027	1043	1059	1115	1129	1143	1153

Portland Rip Croft	1120	1134	1150	1206	1220	1234	1248	1302	1316	1330	1345	1359	1413	1427	1443	1459	1515	1531	1548	1605	1621	1637	1653
Easton Square	1130	1144	1200	1216	1230	1244	1258	1311	1325	1339	1354	1408	1422	1436	1452	1508	1525	1541	1558	1614	1630	1646	1702
Portland Victoria Square	1139	1153	1209	1224	1238	1252	1306	1320	1334	1348	1403	1417	1430	1444	1500	1516	1534	1550	1607	1622	1638	1654	1710
Wyke Regis Foords Corner	1151	1205	1221	1236	1250	1304	1318	1332	1346	1400	1415	1429	1443	1457	1513	1529	1547	1603	1620	1635	1651	1707	1723
Commercial Rd bus depot	1204	1218	1234	1249	1303	1317	1331	1346	1400	1414	1429	1443	1500	1514	1530	1546	1601	1617	1634	1648	1704	1720	1736
Weymouth King's Statue	1208	1222	1238	1253	1307	1321	1335	1350	1404	1418	1433	1447	1504	1518	1534	1550	1605	1621	1638	1651	1707	1723	1739

Portland Rip Croft	1708	1720	1736	1750	1807	1822	1842	1854	1914	1936	1958	2028	2059	2129	2159	2229	2259	2329	▼ these buses continue to Dorchester as route 10			
Easton Square	1717	1728	1744	1758	1815	1830	1850	1902	1922	1944	2006	2036	2107	2137	2207	2236	2306	2336				
Portland Victoria Square	1725	1736	1752	1806	1823	1838	1858	1910	1928	1950	2012	2043	2114	2143	2213	2243	2313	2343				
Wyke Regis Foords Corner	1738	1749	1805	1819	1836	1847	1907	1919	1937	1959	2021	2052	2123	2151	2221	2251	2321	2351				
Commercial Rd bus depot	1749	1800	1816	1830	1847	1857	1917	1929	1946	2008	2030	2101	2132	2200	2230	2258	2328	2358				
Weymouth King's Statue	1752	1803	1819	1833	1850	1900	1920	1932	1949	2011	2033	2104	2135	2203	2233	2301	2331	0001				

Saturdays

Portland Rip Croft	0529	0557	0631	0702	0728	0749	0806	0826	0846	0904	0920	0939	0956	1014	1030	1050	1105	1121	1138	1155	1211	1228	1243
Easton Square	0536	0604	0638	0710	0736	0757	0814	0834	0854	0912	0930	0949	1006	1024	1040	1100	1115	1131	1148	1205	1221	1238	1253
Portland Victoria Square	0543	0611	0645	0717	0743	0804	0822	0842	0902	0920	0938	0957	1014	1032	1049	1109	1124	1140	1157	1214	1230	1247	1302
Wyke Regis Foords Corner	0550	0618	0653	0726	0752	0813	0832	0852	0912	0930	0950	1009	1026	1044	1101	1121	1136	1152	1209	1226	1242	1259	1314
Commercial Rd bus depot	0557	0625	0701	0735	0801	0822	0842	0902	0922	0940	1002	1021	1038	1056	1114	1134	1148	1204	1221	1238	1254	1311	1326
Weymouth King's Statue	0559	0627	0704	0738	0804	0825	0845	0905	0925	0943	1005	1024	1041	1059	1118	1138	1152	1208	1225	1242	1258	1315	1330

Portland Rip Croft	1300	1317	1334	1349	1406	1423	1440	1457	1514	1531	1548	1605	1621	1638	1653	1708	1725	1740	1755	1815	1835	1855	1915
Easton Square	1309	1326	1343	1358	1415	1432	1449	1506	1522	1539	1556	1613	1629	1646	1701	1716	1733	1748	1803	1823	1843	1903	1923
Portland Victoria Square	1318	1335	1352	1407	1423	1440	1457	1514	1530	1547	1604	1621	1637	1654	1709	1724	1741	1756	1811	1831	1851	1911	1930
Wyke Regis Smugglers	1329	1346	1403	1418	1435	1452	1509	1526	1541	1558	1615	1632	1648	1705	1720	1735	1752	1807	1822	1841	1901	1921	1940
Commercial Rd bus depot	1344	1401	1418	1433	1448	1505	1522	1539	1555	1612	1629	1643	1659	1716	1731	1745	1802	1817	1832	1850	1910	1930	1948
Weymouth King's Statue	1349	1406	1423	1438	1452	1509	1526	1543	1559	1616	1633	1647	1703	1720	1735	1748	1805	1820	1835	1853	1913	1933	1951

Portland Rip Croft	1936	1957	2017	2035	2059	2129	2159	2229	2259	2329	▼ these buses continue to Dorchester as route 10											
Easton Square	1944	2005	2025	2043	2107	2137	2207	2237	2307	2337												
Portland Victoria Square	1951	2012	2032	2050	2114	2144	2214	2243	2313	2343												
Wyke Regis Smugglers	2001	2022	2042	2059	2123	2153	2223	2252	2322	2352												
Commercial Rd bus depot	2009	2030	2050	2107	2131	2201	2231	2259	2329	2359												
Weymouth King's Statue	2012	2033	2053	2110	2134	2204	2234	2302	2332	2402												

towards **Portland**

Sundays & public holidays

Weymouth King's Statue	0521	0549	0624	0656	0726	0756	0814	0832	0852	0906	0925	0947	1007	1025	1045	1102	1122	1142	1202	1222	1242	1302	1322
Weymouth rail station	0521	0549	0624	0656	0726	0756	0814	0832	0852	0907	0926	0948	1008	1026	1046	1103	1123	1143	1203	1223	1243	1303	1323
Wyke Regis Foords Corner	0527	0555	0630	0702	0733	0803	0821	0839	0859	0914	0933	0955	1015	1033	1053	1111	1131	1151	1211	1233	1253	1313	1333
Portland Victoria Square	0535	0603	0639	0711	0741	0811	0830	0848	0908	0924	0943	1005	1025	1044	1104	1123	1143	1203	1223	1244	1304	1324	1344
Easton Square	0541	0609	0645	0717	0748	0818	0837	0855	0915	0931	0950	1012	1032	1053	1113	1132	1152	1212	1232	1253	1313	1333	1352
Portland Rip Croft	0547	0615	0652	0724	0754	0824	0844	0902	0922	0939	0958	1020	1040	1100	1120	1140	1200	1220	1240	1301	1321	1341	1400

Weymouth King's Statue	1342	1402	1422	1442	1502	1522	1542	1603	1623	1644	1704	1724	1744
Weymouth rail station	1343	1403	1423	1443	1503	1523	1543	1604	1624	1645	1705	1725	1745
Wyke Regis Foords Corner	1353	1413	1433	1453	1513	1533	1553	1612	1632	1653	1713	1733	1753
Portland Victoria Square	1404	1423	1443	1503	1523	1543	1603	1623	1643	1704	1723	1743	1803
Easton Square	1412	1431	1451	1511	1532	1552	1612	1632	1652	1713	1731	1751	1811
Portland Rip Croft	1420	1440	1500	1520	1540	1600	1620	1640	1700	1721	1739	1759	1819

Weymouth King's Statue	1804	1825	1850	1922	1952	2022	2052	2122	2152	2222	2252	2322
Weymouth rail station	1805	1826	1851	1923	1953	2023	2053	2123	2153	2223	2253	2323
Wyke Regis Foords Corner	1812	1833	1858	1930	2000	2030	2100	2130	2200	2229	2259	2330
Portland Victoria Square	1823	1844	1909	1940	2010	2040	2109	2139	2209	2238	2308	2338
Easton Square	1831	1852	1917	1948	2018	2048	2117	2146	2216	2245	2315	2345
Portland Rip Croft	1839	1900	1925	1955	2025	2055	2124	2153	2223	2252	2322	2351



Jane Austen

Weymouth is portrayed in the novels of Jane

Austen as a seaside resort for profligate young men and silly women, and the ideal place for a foolish, secret engagement. In *Emma*, for example, it's where Jane Fairfax and Frank Churchill meet and fall in love and where they also get secretly engaged.

towards **Weymouth**

Sundays & public holidays

Portland Rip Croft	0551	0619	0656	0728	0758	0828	0848	0908	0928	0943	1004	1025	1045	1105	1125	1145	1205	1226	1247	1307	1327	1347	1407
Easton Square	0559	0627	0704	0736	0806	0837	0857	0917	0937	0952	1013	1034	1054	1114	1134	1154	1214	1235	1256	1316	1336	1356	1416
Portland Victoria Square	0605	0633	0710	0743	0813	0844	0904	0925	0945	1000	1022	1043	1103	1123	1143	1203	1224	1245	1306	1325	1345	1405	1425
Wyke Regis Smugglers	0613	0641	0718	0751	0821	0853	0913	0935	0955	1010	1034	1055	1115	1135	1155	1215	1236	1257	1318	1337	1357	1417	1437
Commercial Rd bus depot	0621	0649	0726	0800	0830	0903	0923	0946	1006	1021	1045	1106	1126	1146	1206	1226	1247	1308	1329	1349	1409	1429	1449
Weymouth King's Statue	0624	0652	0729	0803	0833	0906	0926	0949	1009	1024	1049	1110	1130	1150	1210	1230	1251	1312	1333	1353	1413	1433	1453

Portland Rip Croft	1427	1447	1507	1527	1547	1607	1627	1647	1707	1727	1744	1805	1826	1846	1906	1929	1959	2029	2059	2129	2159	2229	2259
Easton Square	1436	1456	1516	1536	1556	1616	1636	1656	1716	1736	1753	1813	1834	1854	1914	1937	2007	2037	2107	2137	2207	2236	2306
Portland Victoria Square	1445	1505	1525	1545	1605	1624	1644	1704	1723	1743	1800	1820	1841	1901	1920	1943	2013	2043	2113	2143	2213	2242	2312
Wyke Regis Smugglers	1457	1517	1536	1556	1616	1635	1655	1715	1733	1753	1810	1829	1850	1910	1928	1951	2021	2051	2121	2151	2221	2250	2320
Commercial Rd bus depot	1509	1529	1548	1608	1628	1645	1705	1725	1742	1802	1819	1838	1859	1919	1936	1959	2029	2059	2129	2158	2228	2257	2327
Weymouth King's Statue	1513	1533	1552	1612	1632	1648	1708	1728	1745	1805	1822	1841	1902	1922	1939	2002	2032	2102	2132	2201	2231	2300	2330

Portland Rip Croft	2329	▼ these buses continue to Dorchester as route 10
Easton Square	2336	
Portland Victoria Square	2342	
Wyke Regis Smugglers	2350	
Commercial Rd bus depot	2357	
Weymouth King's Statue	0000	

towards **Littlemoor****Mondays to Fridays** except public holidays

Weymouth King's Statue	0540	0630	0655	0720	0745	0800	0815	0830	0845	0900	0915	0930	0945	1000	1015	1030	1045	1100	1115	1130	1145	1201	1217
Radipole Sainsbury's	0544	0634	0659	0725	0750	0805	0820	0835	0850	0905	0920	0935	0950	1005	1021	1036	1051	1106	1121	1136	1151	1207	1223
Broadway church	0548	0638	0703	0730	0755	0810	0826	0841	0856	0911	0926	0941	0956	1011	1026	1041	1056	1111	1127	1142	1157	1213	1229
Littlemoor Canberra Road	0553	0643	0708	0735	0800	0815	0832	0847	0902	0917	0932	0947	1002	1017	1033	1048	1103	1118	1135	1150	1205	1221	1237
Weymouth King's Statue	1232	1247	1302	1318	1333	1348	1403	1419	1434	1450	1506	1522	1538	1554	1610	1626	1642	1658	1713	1729	1745	1801	1816
Radipole Sainsbury's	1238	1253	1308	1324	1339	1354	1409	1425	1440	1456	1513	1529	1545	1601	1617	1633	1649	1705	1719	1735	1751	1806	1821
Broadway church	1244	1259	1314	1330	1345	1400	1416	1432	1447	1503	1521	1537	1553	1609	1626	1642	1658	1714	1728	1744	1800	1811	1826
Littlemoor Canberra Road	1252	1307	1321	1337	1352	1407	1424	1440	1455	1511	1530	1546	1602	1618	1634	1650	1706	1722	1736	1752	1808	1817	1832
Weymouth King's Statue	1832	1848	1913	1938	1958	2023	2049	2139	2231	2321													
Radipole Sainsbury's	1837	1853	1918	1943	2003	2028	2054	2144	2236	2325													
Broadway church	1842	1858	1923	1948	2007	2033	2059	2149	2240	2330													
Littlemoor Canberra Road	1848	1904	1928	1953	2013	2037	2103	2154	2244	2334													

Saturdays

Weymouth King's Statue	0650	0715	0740	0805	0830	0900	0920	0935	0950	1005	1020	1035	1050	1105	1120	1135	1150	1210	1230	1250	1310	1325	1340
Radipole Sainsbury's	0654	0719	0744	0809	0834	0904	0925	0940	0955	1011	1026	1041	1056	1111	1126	1141	1156	1216	1236	1256	1316	1331	1346
Broadway church	0659	0724	0749	0815	0840	0910	0930	0945	1000	1016	1031	1046	1101	1118	1133	1148	1203	1223	1243	1303	1322	1337	1352
Littlemoor Canberra Road	0703	0728	0753	0819	0844	0914	0936	0951	1006	1023	1038	1053	1108	1125	1140	1155	1210	1230	1250	1310	1330	1345	1400
Weymouth King's Statue	1355	1410	1425	1440	1455	1510	1525	1540	1555	1610	1625	1640	1655	1710	1725	1740	1755	1810	1830	1858	1923	1948	2013
Radipole Sainsbury's	1401	1416	1431	1446	1501	1516	1531	1546	1601	1616	1631	1646	1701	1715	1730	1745	1800	1815	1835	1903	1928	1953	2018
Broadway church	1407	1422	1437	1452	1507	1522	1537	1552	1607	1622	1637	1652	1707	1721	1736	1751	1806	1820	1840	1908	1933	1958	2023
Littlemoor Canberra Road	1415	1430	1445	1500	1515	1529	1544	1559	1614	1629	1644	1659	1714	1727	1742	1757	1812	1826	1846	1914	1937	2002	2027
Weymouth King's Statue	2033	2058	2123	2148	2213	2238	2310																
Radipole Sainsbury's	2038	2103	2128	2153	2218	2243	2315																
Broadway church	2043	2108	2133	2158	2223	2248	2319																
Littlemoor Canberra Road	2048	2113	2138	2203	2228	2254	2325																

Sundays & public holidays

Weymouth King's Statue	0715	0805	0855	0945	1005	1025	1045	1105	1125	1145	1205	1225	1245	then at	05 25 45	until	1645	1705	1725	1745	1805	1830	
Radipole Sainsbury's	0719	0809	0859	0949	1010	1030	1050	1111	1131	1151	1210	1230	1250		10 30 50		1650	1710	1730	1750	1809	1834	
Broadway church	0723	0814	0904	0955	1015	1035	1055	1116	1136	1156	1216	1236	1256		16 36 56		1656	1715	1735	1755	1814	1839	
Littlemoor Canberra Road	0728	0819	0909	1000	1022	1042	1102	1123	1143	1203	1223	1243	1303		23 43 03		1703	1721	1741	1801	1820	1845	
Weymouth King's Statue	1855	1945	2030	2120	2210	2300																	
Radipole Sainsbury's	1859	1949	2035	2125	2215	2305																	
Broadway church	1904	1954	2040	2129	2219	2311																	
Littlemoor Canberra Road	1910	1959	2044	2133	2224	2315																	

towards **Weymouth town centre****Mondays to Fridays** except public holidays

Littlemoor Canberra Road	0554	0644	0709	0736	0801	0816	0833	0848	0903	0918	0933	0948	1003	1018	1034	1049	1104	1119	1136	1151	1206	1222	1238
Littlemoor Buddleia Close	0558	0647	0712	0740	0805	0820	0837	0852	0907	0922	0937	0952	1007	1022	1038	1053	1108	1123	1140	1155	1210	1226	1242
Broadway church	0602	0652	0717	0746	0811	0826	0844	0859	0914	0929	0944	0959	1014	1029	1045	1100	1115	1130	1146	1201	1216	1232	1248
Radipole Sainsbury's	0607	0657	0722	0751	0816	0831	0851	0906	0921	0936	0951	1006	1021	1036	1052	1107	1122	1137	1153	1208	1223	1239	1255
Weymouth King's Statue	0618	0710	0735	0808	0833	0848	0909	0924	0939	0954	1009	1024	1039	1054	1108	1123	1138	1153	1210	1225	1240	1255	1311

Littlemoor Canberra Road	1253	1308	1322	1338	1353	1408	1425	1441	1456	1512	1531	1547	1603	1619	1635	1651	1707	1723	1737	1753	1809	1818	1833
Littlemoor Buddleia Close	1257	1312	1327	1343	1358	1413	1429	1445	1500	1516	1535	1551	1607	1623	1639	1655	1711	1727	1741	1757	1813	1822	1837
Broadway church	1303	1318	1333	1349	1404	1419	1435	1451	1506	1522	1541	1557	1613	1629	1644	1700	1716	1732	1746	1802	1818	1827	1842
Radipole Sainsbury's	1310	1325	1339	1355	1410	1425	1442	1458	1513	1529	1547	1603	1619	1635	1650	1706	1722	1738	1751	1807	1823	1831	1846
Weymouth King's Statue	1326	1341	1356	1412	1427	1442	1500	1516	1531	1547	1604	1620	1636	1652	1707	1723	1739	1755	1803	1819	1835	1841	1856

Littlemoor Canberra Road	1849	1905	1929	1954	2013	2037	2103	2154	2244	2334													
Littlemoor Buddleia Close	1853	1909	1932	1957	2016	2041	2107	2158	2248	2338													
Coombe Valley Road	▼	▼	▼	▼	2019	2043	2109	2200	2251	2341													
Broadway church	1858	1914	1937	2002	2026	2051	2117	2207	2258	2347													
Radipole Sainsbury's	1902	1918	1942	2007	2031	2056	2122	2212	2303														
Weymouth King's Statue	1912	1928	1952	2017	2042	2105	2131	2223	2312														

Saturdays

Littlemoor Canberra Road	0704	0729	0754	0820	0845	0915	0937	0952	1007	1024	1039	1054	1109	1126	1141	1156	1211	1231	1251	1311	1331	1346	1401
Littlemoor Buddleia Close	0708	0733	0758	0825	0850	0920	0941	0956	1011	1028	1043	1058	1113	1130	1145	1200	1215	1235	1255	1315	1335	1350	1405
Broadway church	0713	0738	0803	0830	0855	0925	0948	1003	1018	1035	1050	1105	1120	1137	1152	1207	1222	1242	1302	1322	1340	1355	1410
Radipole Sainsbury's	0718	0743	0808	0836	0901	0931	0955	1010	1025	1043	1058	1113	1128	1145	1200	1215	1230	1248	1308	1328	1346	1401	1416
Weymouth King's Statue	0729	0754	0819	0850	0915	0945	1011	1026	1041	1059	1114	1129	1144	1201	1216	1231	1246	1305	1325	1345	1401	1416	1431

Littlemoor Canberra Road	1416	1431	1446	1501	1516	1530	1545	1600	1615	1630	1645	1700	1715	1728	1743	1758	1813	1827	1847	1915	1938	2003	2028
Littlemoor Buddleia Close	1420	1435	1450	1505	1520	1533	1548	1603	1618	1634	1649	1704	1719	1732	1747	1802	1817	1830	1850	1918	1942	2007	2032
Broadway church	1425	1441	1456	1511	1526	1540	1555	1610	1625	1639	1654	1709	1724	1737	1752	1807	1822	1836	1856	1924	1947	2012	2036
Radipole Sainsbury's	1431	1447	1502	1517	1532	1545	1600	1615	1630	1644	1659	1714	1729	1743	1758	1813	1828	1841	1901	1929	1952	2017	2042
Weymouth King's Statue	1446	1502	1517	1532	1547	1601	1616	1631	1646	1700	1715	1730	1745	1756	1811	1826	1841	1851	1911	1939	2002	2027	2051

Littlemoor Canberra Road	2048	2113	2138	2203	2228	2254	2325																
Littlemoor Buddleia Close	2051	2116	2141	2206	2231	2257	2328																
Coombe Valley Road	2053	2118	2144	2209	2234	2259	2330																
Broadway church	2101	2126	2151	2216	2241	2307	2338																
Radipole Sainsbury's	2106	2131	2156	2221	2246	2312																	
Weymouth King's Statue	2116	2141	2207	2232	2257	2322																	

towards **Weymouth town centre**

2

Sundays & public holidays

Littlemoor Canberra Road	0729	0820	0910	1001	1023	1043	1103	1124	1144	1204	1224	1244	1304	1324	1344	1404	1424	1444	1504	1524	1544	1604	1624
Littlemoor Buddleia Close	0733	0823	0913	1005	1026	1046	1106	1128	1148	1208	1227	1247	1307	1328	1348	1408	1428	1448	1508	1528	1548	1608	1627
Broadway church	0738	0829	0919	1011	1032	1052	1112	1134	1154	1214	1233	1253	1313	1335	1415	1434	1454	1514	1533	1553	1613	1632	
Radipole Sainsbury's	0743	0834	0924	1018	1039	1059	1119	1141	1201	1221	1240	1300	1320	1341	1401	1421	1440	1500	1520	1539	1559	1619	1638
Weymouth King's Statue	0755	0847	0937	1035	1055	1115	1135	1157	1217	1237	1257	1317	1337	1356	1416	1436	1454	1514	1534	1554	1614	1634	1652

Littlemoor Canberra Road	1644	1704	1722	1742	1802	1821	1846	1911	2000	2044	2133	2224	2315
Littlemoor Buddleia Close	1647	1707	1726	1746	1806	1824	1849	1914	2004	2047	2137	2227	2319
Coombe Valley Road	▼	▼	▼	▼	▼	▼	▼	▼	▼	2050	2139	2230	2321
Broadway church	1652	1712	1731	1751	1811	1828	1853	1918	2008	2057	2147	2237	2328
Radipole Sainsbury's	1658	1718	1736	1756	1816	1833	1858	1923	2013	2102	2151	2242	
Weymouth King's Statue	1712	1732	1746	1806	1826	1842	1907	1932	2022	2113	2204	2254	

towards **Southhill**

3

Mondays to Fridays except public holidays

Weymouth King's Statue	1005	1055	1145	1235	1325	1415	1415	1700
King Street rail station	1007	1057	1147	1237	1327	1417	1417	1702
Weymouth Asda	1011	1101	1151	1242	1331	1421	1421	1706
Devon Road	0929	1019	1109	1159	1250	1339	1429	1714
Westham Hereford Road	0933	1023	1113	1204	1254	1343	1433	1718
Southhill Mayfield Close	0939	1028	1118	1209	1300	1349	1439	1724
Weymouth Asda	0947	1036	1126	1217	1307	1356	1446	1731
Weymouth King's Statue	0958	1048	1138	1228	1318	1406	1456	1741

school days only

school holidays only

hail & ride

Please raise your hand for the bus to stop in **Upper Radipole Lane** and **Field Barn Drive**.

All other bus stops will be served.





Nottingham

Upwey

Wey Valley Academy
Redlands Community Sports Hub

Redland

Morrisons
Sainsbury's
Aldi

Radipole

Mount Pleasant Park & Ride

Weymouth & Portland Rugby Club

RSPB Lodmoor

Lodmoor Country Park

SEALIFE Centre

Weymouth College

Weymouth Community Hospital

Radipole Lake Nature Reserve

Weymouth

Weymouth town centre

King's Statue

Weymouth Swimming Pool

Town Bridge

Nothe Gardens

4

Haven Weymouth Bay Holiday Park

Haven Seaview Holiday Park

Bowleaze Cove Holiday Park & Spa

Eweleaze

Weymouth Bay

Dorset Police

Southhill

Westhaven Hospital

Westham

towards **Overcombe & Preston****Monday to Friday school days** except public holidays

Weymouth King's Statue	0720	0800	0840	0920	0940	1000	1020	1040	1100	1120	1140	1200	1220	1240	1300	1320	1340	1400	1420	1440	1500	1520	1540
Chalbury Corner	0726	0806	0846	0927	0947	1007	1028	1048	1108	1127	1147	1207	1227	1247	1307	1327	1347	1407	1427	1447	1507	1528	1548
Preston Seven Acres Road	0731	0811	0852	0934	0954	1014	1035	1055	1115	1135	1155	1215	1235	1255	1315	1334	1354	1414	1436	1456	1516	1536	1556

Weymouth King's Statue	1600	1620	1640	1700	1720	1740	1800	1820	1855	1930	2005	2040	2115
Chalbury Corner	1608	1628	1648	1708	1727	1747	1807	1827	1902	1936	2011	2046	2122
Preston Seven Acres Road	1616	1636	1656	1716	1734	1754	1814	1832	1907	1941	2016	2051	2127

Saturdays

Weymouth King's Statue	0830	0910	0930	0950	1010	1030	1050	1110	1130	1150	1210	1230	1250	1310	1330	1350	1410	1430	1450	1510	1530	1550	1610
Chalbury Corner	0836	0916	0936	0956	1018	1038	1058	1118	1138	1158	1217	1237	1257	1317	1337	1357	1417	1437	1457	1517	1537	1557	1618
Preston Seven Acres Road	0844	0924	0944	1004	1025	1045	1105	1125	1145	1205	1225	1245	1305	1325	1345	1405	1425	1445	1505	1525	1545	1605	1625

Weymouth King's Statue	1630	1650	1710	1730	1750	1810	1845	1920	1955	2030	2105
Chalbury Corner	1638	1658	1717	1737	1757	1817	1852	1927	2002	2037	2112
Preston Seven Acres Road	1645	1705	1724	1744	1804	1824	1859	1933	2008	2043	2118

Sundays & public holidays

Weymouth King's Statue	0850	0925	1000	1035	1110	1130	1150	1210	1230	1250	1310	1330	1350	1410	1430	1450	1510	1530	1550	1610	1630	1650	1710
Chalbury Corner	0857	0932	1007	1041	1116	1136	1156	1216	1236	1256	1316	1336	1356	1417	1437	1457	1517	1537	1557	1617	1637	1657	1717
Preston Seven Acres Road	0903	0938	1013	1046	1122	1142	1202	1223	1243	1303	1323	1343	1403	1424	1444	1504	1524	1544	1604	1623	1643	1703	1723

Weymouth King's Statue	1745	1820	1855
Chalbury Corner	1752	1827	1902
Preston Seven Acres Road	1758	1832	1907



towards **Weymouth town centre****Monday to Friday school days** except public holidays

Preston Seven Acres Road	0732	0812	0853	0935	0955	1015	1036	1056	1116	1136	1156	1216	1236	1256	1316	1335	1355	1415	1437	1457	1517	1537	1557
Chalbury Corner	0734	0814	0855	0937	0957	1017	1038	1058	1118	1138	1158	1218	1238	1258	1318	1337	1357	1417	1439	1459	1519	1539	1559
Weymouth King's Statue	0747	0827	0909	0952	1012	1032	1053	1113	1133	1154	1214	1234	1252	1312	1332	1352	1412	1432	1453	1513	1533	1553	1613

Preston Seven Acres Road	1617	1637	1657	1717	1735	1755	1815	1833	1908	1942	2017	2052	2128
Chalbury Corner	1619	1639	1659	1719	1737	1757	1817	1835	1910	1944	2019	2054	2130
Weymouth King's Statue	1633	1653	1713	1733	1750	1810	1830	1845	1920	1956	2029	2104	2138

Saturdays

Preston Seven Acres Road	0845	0925	0945	1005	1026	1046	1106	1126	1146	1206	1226	1246	1306	1326	1346	1406	1426	1446	1506	1526	1546	1606	1626
Chalbury Corner	0846	0927	0947	1007	1028	1048	1108	1128	1148	1208	1228	1248	1308	1327	1347	1407	1427	1447	1507	1528	1548	1608	1627
Weymouth King's Statue	0900	0941	1001	1021	1043	1103	1123	1144	1204	1224	1243	1303	1323	1342	1402	1422	1442	1502	1522	1542	1602	1622	1639

Preston Seven Acres Road	1646	1706	1725	1745	1805	1825	1900	1934	2009	2044	2119
Chalbury Corner	1647	1707	1727	1747	1807	1826	1901	1936	2011	2046	2121
Weymouth King's Statue	1659	1719	1740	1800	1820	1838	1913	1947	2022	2058	2133

Sundays & public holidays

Preston Seven Acres Road	0904	0939	1014	1047	1123	1143	1203	1224	1244	1304
Chalbury Corner	0906	0941	1016	1050	1125	1145	1205	1226	1246	1306
Weymouth King's Statue	0919	0954	1029	1103	1140	1200	1220	1238	1258	1318

Preston Seven Acres Road	1324	1344	1404	1425	1445	1505	1525	1545	1605	1624
Chalbury Corner	1326	1346	1406	1426	1446	1506	1527	1547	1607	1626
Weymouth King's Statue	1338	1358	1418	1440	1500	1520	1539	1559	1619	1640

Preston Seven Acres Road	1644	1704	1724	1759	1833	1908
Chalbury Corner	1646	1706	1725	1800	1835	1910
Weymouth King's Statue	1700	1720	1738	1813	1847	1922





£2
any one-way ride

towards **Yeovil**

Mondays to Fridays except public holidays

			0930	1020	1140	1310	1500	1710		
Bridport Community Hospital										
Bridport bus station	0710	0745	0750	▼	▼	▼	▼	▼	1821	
Bridport West Street	0711	0747	0752	0935	1024	1144	1314	1504	1716	1823
South Street Builder's Merchant	0712	0749	0755	0937	1028	1148	1318	1509	1720	1827
Bradpole King's Head	0718	0756	0802	0945	1036	1156	1326	1517	1728	1835
Melplash Half Moon	0723	0801	0807	0950	1041	1201	1331	1522	1732	1840
Beaminster Square	0730	0807	0813	0958	1048	1208	1338	1529	1740	1848
Monmouth Gardens	0732	0809	0815	▼	1052	1212	▼	1533	1744	
Beaminster School	▼	0811	▼	▼	▼	▼	▼	▼	▼	
Broadwindsor White Lion	▼			1010		1353				
Mosterton The Admiral Hood	0738			1021		1408				
Misterton White Swan	0743			1025		1413				
Crewkerne rail station	0746			1028		1416				
Crewkerne Kings Arms	0753			1035		1422				
East Chinnock Portman Arms	0802			1044		1430				
West Coker Post Office	0807			1048		1435				
Yeovil Borough	0820			1100		1447				
Yeovil bus station	0825			1104		1451				

school days only

school holidays only

towards **Bridport**

Mondays to Fridays except public holidays

Yeovil College									1625	
Yeovil bus station				0840		1255			1635	
West Coker Post Office				0852		1307			1647	
East Chinnock Portman Arms				0855		1310			1650	
Crewkerne George Hotel				0904		1320			1702	
Crewkerne railway station				0909		1325			1707	
Misterton White Swan				0912		1328			1710	
Mosterton				0916		1332			1715	
Broadwindsor Old Bakery				0926		1343			1722	
Beaminster School				▼		▼		1540	▼	
Monmouth Gardens	0709	0820	0820	▼	1100	1220	▼	1540	1542	▼
Beaminster Square	0711	0822	0822	0937	1102	1222	1353	1542	1544	1732
Melplash Half Moon	0717	0829	0828	0944	1108	1228	1400	1549	1550	1739
Colfox School Grounds			0833	▼	▼	▼	▼	▼	▼	
Bradpole Kings Head	0722	0834	0838	0949	1113	1232	1405	1554	1555	1744
South Street Dr Roberts Close	0729	0841	0845	0957	1120	1241	1413	1601	1602	1751
Bridport West Street	0733	0845	0849	1002	1125	1247	1419	1605	1606	1755
Bridport bus station	0735	▼	▼	▼	▼	▼	▼	1607	1608	1757
Bridport Community Hospital	0851	0855	1010	1132	1255	1427				

school days only

school holidays only

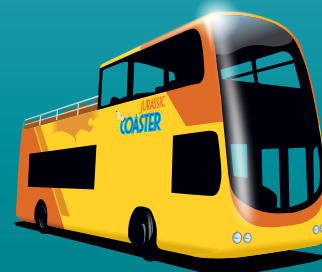
Durdle Door

This magnificent natural limestone arch is part of the Jurassic Coast World Heritage Site.

It was formed by the sheer power of these waves eroding the rock and forging a hole through the middle.

The name Durdle comes from old English word 'thirl', meaning to pierce, bore or drill.

Our open-top Jurassic Coaster X50 buses run to Lulworth Cove and Durdle Door all summer long - see pages 70-73.



towards **Chickerell****Mondays to Fridays** except public holidays

Weymouth The Range	0550	0640	0730	0820	0850	0920	0950	1020	1050	1120	1150	1220	1250	1320	1350	1420	1450	1520	1550	1620	1650	1720
Fiveways	0557	0647	0738	0829	0859	0929	0959	1030	1100	1131	1201	1231	1301	1331	1401	1431	1501	1532	1602	1631	1701	1731
Chickerell Glennie Way	0601	0651	0743	0835	0905	0934	1004	1036	1106	1136	1206	1236	1306	1336	1406	1437	1507	1538	1608	1637	1707	1736
Chickerell East Street	0606	0655	0749	0842	0912	0941	1011	1042	1112	1143	1213	1243	1313	1343	1413	1443	1513	1545	1615	1643	1713	1742
Weymouth The Range	1750	1820	1910	2000	2050	2140	2230															
Fiveways	1801	1828	1920	2010	2100	2150	2240															
Chickerell Glennie Way	1806	1833	1924	2014	2104	2154	2244															
Chickerell East Street	1812	1839	1930	2020	2110	2200	2250															

Fridays only

Saturdays

Weymouth The Range	0740	0830	0920	0950	1020	1050	1120	1150	1220	1250	1320	1350	1420	1450	1520	1550	1620	1650	1720	1750	1820	1900
Fiveways	0749	0839	0929	0959	1030	1100	1130	1200	1231	1301	1330	1400	1430	1500	1530	1600	1630	1700	1730	1800	1828	1908
Chickerell Glennie Way	0753	0844	0934	1004	1035	1105	1136	1206	1236	1306	1335	1405	1435	1505	1535	1605	1635	1705	1735	1805	1833	1913
Chickerell East Street	0759	0850	0940	1010	1041	1111	1142	1212	1242	1312	1341	1411	1441	1511	1542	1612	1642	1712	1741	1811	1839	1919

Sundays & public holidays

Weymouth The Range	2000	2050	2140	2230			0920	1020	1120	1220	1320	1420	1520	1620	1720	1820						
Fiveways	2009	2059	2149	2239			0927	1027	1127	1228	1329	1429	1529	1630	1728	1829						
Chickerell Glennie Way	2013	2103	2153	2243			0832	0932	1032	1132	1234	1334	1434	1534	1634	1733	1834					
Chickerell East Street	2019	2109	2159	2249			0838	0939	1039	1138	1240	1340	1440	1540	1639	1739	1839					

towards **Weymouth town centre****Mondays to Fridays** except public holidays

Chickerell East Street	0607	0656	0750	0843	0913	0942	1012	1043	1113	1144	1214	1244	1314	1344	1414	1444	1514	1546	1616	1644	1714	1743
Fiveways	0613	0702	0758	0851	0921	0951	1021	1053	1123	1154	1224	1253	1323	1352	1422	1453	1523	1555	1625	1653	1723	1752
Commercial Rd bus depot	0621	0710	0809	0906	0936	1007	1037	1107	1137	1208	1238	1308	1338	1405	1435	1507	1537	1609	1639	1706	1736	1803
Weymouth The Range	0624	0713	0812	0909	0939	1010	1040	1110	1140	1211	1241	1311	1341	1408	1438	1510	1540	1612	1642	1709	1739	1806
Chickerell East Street	1813	1840	1931	2021	2111	2201	2251															
Fiveways	1822	1847	1937	2027	2117	2207	2257															
Commercial Rd bus depot	1833	1857	1946	2036	2124	2214	2304															
Weymouth The Range	1836	1900	1949	2039	2127	2217																

Fridays only

Saturdays

Chickerell East Street	0800	0851	0941	1011	1042	1112	1143	1213	1243	1313	1342	1412	1442	1512	1543	1613	1643	1713	1742	1812	1840	1920
Fiveways	0808	0859	0951	1021	1052	1122	1153	1223	1252	1322	1350	1420	1450	1520	1550	1620	1651	1721	1749	1819	1847	1927
Commercial Rd bus depot	0820	0911	1006	1036	1107	1137	1207	1237	1306	1336	1405	1435	1504	1534	1604	1634	1704	1734	1802	1832	1859	1939
Weymouth The Range	0823	0914	1009	1039	1110	1140	1210	1240	1309	1339	1408	1438	1507	1537	1607	1637	1707	1737	1805	1835	1902	1942

Sundays & public holidays

Chickerell East Street	2020	2110	2200	2250			0839	0940	1040	1139	1241	1341	1441	1541	1640	1740	1840					
Fiveways	2028	2118	2208	2258			0847	0948	1048	1148	1249	1349	1449	1549	1648	1747	1848					
Commercial Rd bus depot	2037	2127	2217	2307			0859	0959	1059	1200	1301	1402	1502	1602	1700	1800	1900					
Weymouth The Range	2040	2130	2220				0902	1002	1102	1203	1304	1405	1505	1605	1703	1803	1903					



Maiden Castle

Get off at Winterborne Monkton to go exploring the mightily impressive earthworks of Maiden Castle.



This is the largest and most complex Iron Age hillfort in Europe. The massive ramparts date from the 1st century. Then, its gleaming white chalk ramparts would have towered over the surrounding landscape, protecting the several hundred people that would have lived there.

Excavations have revealed its origins as a Neolithic enclosure over 6,000 years ago, and discovered a Roman temple from the 4th century AD. Archaeologists have also discovered evidence of a late Iron Age cemetery, where many of those buried had suffered horrific injuries.

You can live-stream a free audio experience on your mobile device or download an audio app to take you on a 40-minute journey through time and place.

www.english-heritage.org.uk

towards **Dorchester & Poundbury****Mondays to Fridays** except public holidays



	10A 																					
Weymouth King's Statue	0601	0621	0641	0701	0718	0733	0746	0746	0809	0819	0825	0825	0848	0908	0925	0942	0959	1016	1033	1050	1107	1123
Dorchester Road Morrisons	0607	0627	0647	0707	0724	0739	0755	▼	0816	0826	0834	0839	0855	0915	0932	0949	1006	1025	1042	1059	1116	1132
Upwey Elwell Street	0613	0633	0653	0715	0732	0747	0804	0809	0824	0834	0843	0848	0903	0923	0940	0957	1014	1033	1050	1107	1124	1140
Dorchester Trinity Street	0623	0643	0703	0727	0744	0759	0820	0825	0840	0850	0859	0903	0919	0939	0956	1013	1030	1051	1108	1125	1140	1156
Dorset County Hospital Bridport Rd	0626	0646	0706	0731	0748	0803	0825	0830	0845	0855	0904	0908	0924	0944	1001	1018	1035	1056	1113	1130	1145	1201
Poundbury Mansell Square	0629	0649	0709	0736	0753	0808	0830		0850	0900	0909	0910	0929	0949	1006	1023	1040	1102	1119	1136	1151	1207

Weymouth King's Statue	1140	1155	1210	1225	1240	1255	1310	1325	1340	1356	1411	1426	1441	1458	1458	1512	1529	1546	1603	1620	1637	1654
Dorchester Road Morrisons	1149	1204	1220	1235	1250	1305	1319	1334	1349	1405	1421	1436	1451	1507	1507	1523	1540	1557	1614	1631	1648	1705
Upwey Elwell Street	1157	1212	1228	1243	1258	1313	1327	1342	1357	1413	1430	1445	1500	1515	1515	1532	1549	1606	1623	1640	1657	1714
Dorchester Trinity Street	1213	1228	1241	1256	1311	1326	1341	1356	1411	1427	1443	1458	1513	1530	1530	1546	1603	1620	1637	1654	1711	1728
Dorset County Hospital Bridport Rd	1218	1233	1246	1301	1316	1331	1345	1400	1415	1431	1448	1503	1518		1535	1552	1609	1626	1641	1658	1715	1732
Poundbury Mansell Square	1224	1239	1251	1306	1321	1336	1350	1405	1420	1436	1453	1508	1523		1537	1556	1613	1630	1647	1704	1721	1738

Weymouth King's Statue	1711	1728	1745	1802	1824	1908	2010	2113	2213													
Dorchester Road Morrisons	1720	1737	1754	1808	1830	1914	2015	2118	2218													
Upwey Elwell Street	1728	1745	1802	1816	1838	1922	2022	2124	2225													
Dorchester Trinity Street	1741	1758	1815	1827	1849	1933	2033	2135	2235													
Dorset County Hospital Bridport Rd	1744	1801	1818	1831	1853	1937	2037	2138	2238													
Poundbury Mansell Square	1750	1807	1824	1835	1857	1941	2041	2141	2242													

school days only

school holidays only

-  this bus also stops at
Chalbury Corner 0757
Littlemoor shops 0802 and continues to
Thomas Hardy School 0835
-  this bus also stops at Weymouth College
at 0832 on college days

Saturdays

Weymouth King's Statue	0601	0632	0651	0710	0731	0751	0811	0831	0852	0912	0934	0956	1016	1036	1056	1116	1136	1158	1220	1241	1302	1322
Dorchester Road Morrisons	0606	0637	0656	0715	0736	0756	0816	0836	0857	0918	0940	1002	1026	1046	1106	1127	1147	1209	1229	1250	1311	1331
Upwey Elwell Street	0611	0642	0701	0720	0743	0803	0823	0843	0904	0926	0948	1010	1033	1053	1113	1135	1155	1217	1238	1259	1319	1339
Dorchester Trinity Street	0620	0651	0710	0729	0753	0813	0833	0853	0914	0938	1000	1022	1047	1107	1127	1148	1208	1230	1251	1312	1331	1351
Dorset County Hospital Bridport Rd	0623	0654	0713	0732	0755	0815	0837	0857	0918	0942	1004	1026	1051	1111	1131	1153	1213	1235	1255	1316	1336	1356
Poundbury Mansell Square	0628	0659	0718	0737	0759	0819	0841	0901	0922	0948	1010	1032	1057	1117	1137	1158	1218	1240	1300	1321	1340	1400

Weymouth King's Statue	1344	1404	1424	1444	1504	1524	1544	1604	1626	1648	1710	1732	1754	1816	1836	1856	1926	2010	2113	2213	2313
Dorchester Road Morrisons	1353	1414	1434	1454	1513	1533	1553	1612	1634	1656	1717	1739	1801	1821	1841	1901	1931	2015	2118	2218	2318
Upwey Elwell Street	1401	1422	1442	1502	1521	1541	1601	1621	1643	1705	1725	1747	1809	1829	1849	1909	1939	2023	2125	2226	2325
Dorchester Trinity Street	1413	1434	1454	1514	1534	1554	1614	1633	1655	1717	1737	1759	1821	1841	1901	1921	1950	2034	2136	2236	2336
Dorset County Hospital Bridport Rd	1418	1438	1458	1518	1538	1558	1618	1636	1658	1720	1741	1803	1825	1844	1904	1924	1953	2037	2139	2239	2339
Poundbury Mansell Square	1422	1443	1503	1523	1542	1602	1622	1641	1703	1725	1746	1808	1830	1849	1909	1929	1958	2042	2143	2243	2342

see page 44 for Sunday journeys

towards **Weymouth****Mondays to Fridays** except public holidays

Poundbury Mansell Square	0635	0657	0719	0741	0759		0814		0839	0858	0907	0922	0938	0954	1011	1028	1045	1100	
Dorset County Hospital Bridport Rd	0636	0658	0720	0742	0800	0814	0815		0841	0859	0908	0923	0939	0955	1012	1029	1046	1101	
Brewery Square	0640	0702	0725	0747	0805	0821	0821	0845	0848	0905	0915	0930	0946	1002	1020	1037	1054	1109	
Upwey Elwell Street	0650	0712	0734	0756	0814	0832	0832	0856	0859	0916	0926	0941	0957	1013	1033	1050	1107	1122	
Dorchester Road Morrisons	0656	0718	0742	0804	0822	0841	0841	0905	0908	0925	0935	0950	1006	1022	1042	1059	1116	1132	
Weymouth King's Statue	0711	0733	0756	0818	0836	0849	0857	0913	0916	0941	0950	1005	1021	1037	1058	1115	1132	1148	

school days only

school holidays only

Poundbury Mansell Square	1115	1130	1145	1200	1215	1231	1246	1301	1316	1331	1346	1401	1416	1431	1446	1501	1518	1535		1548	1609
Dorset County Hospital Bridport Rd	1116	1131	1146	1201	1216	1232	1247	1302	1317	1332	1347	1402	1417	1432	1447	1502	1519	1536	1548	1550	1610
Brewery Square	1124	1139	1154	1209	1224	1240	1255	1309	1324	1339	1354	1410	1425	1440	1455	1510	1527	1544	1558	1601	1619
Upwey Elwell Street	1137	1152	1207	1223	1238	1254	1309	1322	1337	1352	1407	1423	1438	1453	1508	1525	1542	1559	1613	1617	1636
Dorchester Road Morrisons	1147	1202	1217	1231	1246	1302	1317	1331	1346	1401	1416	1431	1446	1501	1516	1535	1552	1609	1627	1627	1645
Weymouth King's Statue	1203	1218	1233	1246	1301	1317	1332	1348	1403	1418	1433	1449	1504	1519	1534	1553	1610	1627	1636	1635	1700

10A

this bus starts at
Thomas Hardy School 1543
and also stops at
Littlemoor shops 1621
Chalbury Corner 1626

these journeys continue to Portland as route 1

Saturdays

Poundbury Mansell Square	0630	0703	0724	0744	0806	0826	0847	0909	0931	0953	1015	1037	1059	1121	1143	1204	1224	1246	1306	1327	1347
Dorset County Hospital Bridport Rd	0631	0704	0725	0745	0807	0827	0848	0910	0932	0954	1016	1038	1100	1122	1144	1205	1225	1247	1307	1328	1348
Brewery Square	0636	0709	0730	0750	0812	0832	0853	0916	0938	1000	1023	1045	1107	1129	1151	1212	1232	1254	1314	1335	1355
Upwey Elwell Street	0645	0718	0739	0759	0822	0842	0903	0926	0948	1010	1034	1056	1118	1142	1204	1225	1245	1307	1326	1347	1407
Dorchester Road Morrisons	0651	0724	0745	0805	0829	0849	0910	0934	0956	1018	1043	1105	1127	1152	1214	1235	1255	1317	1335	1356	1416
Weymouth King's Statue	0703	0736	0757	0817	0843	0903	0924	0947	1009	1031	1103	1125	1147	1210	1232	1253	1313	1335	1352	1413	1433

Poundbury Mansell Square	1407	1428	1449	1509	1529	1549	1609	1629	1649	1709	1731	1751	1813	1835	1855	1915	1935	2005	2047	2147	2247
Dorset County Hospital Bridport Rd	1408	1429	1450	1510	1530	1550	1610	1630	1650	1710	1732	1752	1814	1836	1856	1916	1936	2006	2048	2148	2247
Brewery Square	1414	1435	1456	1516	1536	1556	1616	1636	1656	1716	1738	1758	1819	1841	1901	1920	1940	2010	2052	2152	2252
Upwey Elwell Street	1425	1446	1507	1528	1548	1608	1627	1647	1707	1726	1748	1808	1829	1851	1911	1929	1949	2020	2102	2202	2302
Dorchester Road Morrisons	1433	1454	1515	1537	1557	1617	1636	1656	1716	1735	1757	1817	1837	1859	1919	1936	1956	2028	2110	2210	2310
Weymouth King's Statue	1450	1511	1532	1554	1614	1634	1652	1712	1732	1747	1809	1829	1846	1908	1928	1945	2005	2038	2120	2219	2319

these journeys continue to Portland as route 1

towards **Dorchester & Poundbury**

Sundays & public holidays

Weymouth King's Statue	0627	0732	0816	0850	0924	0958	1032	1106	1140	1214	1248	1322	1356	1430	1505	1540	1614	1648	1722	1756	1834
Dorchester Road Morrisons	0632	0737	0822	0856	0930	1004	1040	1115	1149	1223	1257	1330	1404	1439	1513	1548	1620	1654	1728	1802	1839
Upwey Elwell Street	0638	0744	0829	0903	0938	1012	1047	1122	1156	1230	1304	1338	1412	1446	1520	1555	1628	1702	1736	1810	1847
Dorchester Trinity Street	0648	0755	0841	0915	0950	1024	1100	1135	1209	1243	1317	1351	1425	1459	1533	1608	1641	1715	1748	1822	1859
Dorset County Hospital Bridport Rd	0651	0758	0845	0919	0954	1028	1104	1139	1213	1247	1321	1355	1429	1502	1537	1612	1645	1719	1752	1826	1902
Poundbury Mansell Square	0657	0803	0850	0924	1000	1034	1110	1145	1219	1253	1327	1400	1434	1507	1542	1617	1650	1724	1756	1830	1906

Weymouth King's Statue	1912	2012	2113	2213
Dorchester Road Morrisons	1917	2017	2118	2218
Upwey Elwell Street	1924	2024	2125	2225
Dorchester Trinity Street	1935	2035	2136	2235
Dorset County Hospital Bridport Rd	1939	2039	2139	2238
Poundbury Mansell Square	1943	2043	2143	2243



Dorset
Museum
& Art Gallery

Connect with 250 million years of history, explore the galleries and find activities for families and children to enjoy.

towards **Weymouth**

Sundays & public holidays

Poundbury Mansell Square	0704	0809	0857	0932	1007	1042	1117	1152	1226	1300	1334	1408	1442	1516	1550	1625	1659	1733	1807	1837	1915
Dorset County Hospital Bridport Rd	0705	0810	0858	0933	1008	1043	1118	1153	1227	1301	1335	1409	1443	1517	1551	1626	1700	1734	1808	1838	1916
Brewery Square	0710	0815	0903	0938	1014	1049	1125	1200	1233	1307	1340	1415	1449	1523	1557	1632	1706	1739	1812	1842	1920
Upwey Elwell Street	0719	0824	0913	0948	1026	1101	1139	1214	1248	1322	1354	1427	1501	1534	1608	1643	1717	1750	1823	1853	1929
Dorchester Road Morrisons	0726	0831	0920	0955	1035	1110	1148	1223	1256	1330	1402	1436	1510	1543	1617	1651	1725	1758	1830	1900	1935
Weymouth King's Statue	0738	0843	0935	1010	1052	1127	1205	1240	1314	1348	1419	1452	1526	1559	1633	1706	1740	1812	1845	1915	1945

Poundbury Mansell Square	1947	2047	2147	2247
Dorset County Hospital Bridport Rd	1948	2048	2148	2248
Brewery Square	1952	2052	2152	2252
Upwey Elwell Street	2001	2101	2201	2302
Dorchester Road Morrisons	2007	2108	2207	2308
Weymouth King's Statue	2017	2118	2216	2318

these journeys continue to Portland as route 1

high season

Sun 30 Jun - Sat 31 Aug 2024



low season

Sun 12 May - Sat 29 June 2024

Saturdays & Sundays in September



Mondays to Saturdays

Weymouth King's Statue	0940	1040	1140	1240	1340	1450	1550	1650
Weymouth rail station	0941	1041	1142	1242	1342	1453	1553	1653
Weymouth Town Bridge	0946	1046	1147	1247	1347	1458	1558	1658
Wyke Regis Foords Corner	0955	1055	1155	1256	1355	1507	1608	1705
National Sailing Academy	1002	1102	1203	1304	1403	1515	1617	1715
Portland Castle	1007	1107	1208	1309	1408	1519	1621	1719
Portland Heights Hotel	1015	1115	1216	1316	1416	1527	1628	1726
Easton Square	1019	1119	1219	1320	1419	1530	1631	1729
Portland Bill	1030	1130	1232	1332	1431	1540	1642	1740

Sundays

& public holidays

1040	1240	1450	1650
1041	1241	1452	1652
1046	1246	1456	1656
1055	1254	1505	1705
1102	1303	1512	1712
1107	1308	1517	1717
1115	1316	1524	1724
1118	1319	1528	1728
1130	1332	1540	1739

daily

1040	1240	1450	1650
1041	1241	1452	1652
1046	1246	1456	1656
1055	1254	1505	1705
1102	1303	1512	1712
1107	1308	1517	1717
1115	1316	1524	1724
1118	1319	1528	1728
1130	1332	1540	1739



Mondays to Saturdays

Portland Bill	1040	1140	1240	1340	1440	1550	1650	1750
Easton Square	1049	1149	1248	1348	1448	1558	1658	1758
Portland Heights Hotel	1051	1151	1251	1351	1450	1601	1700	1800
Portland Castle	1100	1200	1259	1359	1458	1609	1708	1807
National Sailing Academy	1106	1205	1304	1404	1504	1614	1713	1812
Wyke Regis Foords Corner	1114	1213	1313	1412	1513	1623	1723	1822
Weymouth Magistrates Court	1121	1221	1320	1423	1523	1634	1732	1829
Weymouth King's Statue	1131	1230	1329	1432	1533	1643	1741	1836

Sundays

& public holidays

1140	1340	1550	1750
1148	1348	1558	1758
1151	1351	1600	1800
1159	1359	1608	1808
1205	1404	1613	1813
1213	1413	1621	1820
1220	1421	1628	1827
1228	1428	1636	1836

daily

1140	1340	1550	1750
1148	1348	1558	1758
1151	1351	1600	1800
1159	1359	1608	1808
1205	1404	1613	1813
1213	1413	1621	1820
1220	1421	1628	1827
1228	1428	1636	1836

we may occasionally have to use closed-top buses due to bad weather, or for operational reasons



Nottingham

Redlands Community Sports Hub

Redland

Wyke Oliver Road



Overcombe

Bowleaze Cove Holiday Park & Spa

Coldharbour

Radipole

Weymouth & Portland Rugby Club

RSPB Lodmoor

Lodmoor Country Park

SEALIFE Centre

Southhill

Southhill Garden Drive

Weymouth College

Weymouth Community Hospital

Weymouth Bay

Dorset Police

Weymouth Football Club

Radipole Lake Nature Reserve

Weymouth

Weymouth town centre

King's Statue 12 stand K7 13 stand K8

Weymouth Swimming Pool

Westham

Westhaven Hospital

Charlestown

Budmouth Academy

Fiveways

Littlesea Haven Holiday Centre



Wyke Regis

Sandsfoot Castle & Gardens

low season timetable



12

dates in blue

Littlesea Holiday Park	0930	1030	1130	1230	1330	1430	1530	1630	1730
Fiveways	0938	1038	1138	1238	1338	1438	1538	1638	1738
Weymouth King's Statue K7	0951	1051	1151	1251	1351	1451	1551	1651	1751

Weymouth King's Statue K7	0900	1000	1100	1200	1300	1400	1500	1600	1700	1800
Weymouth rail station	0904	1004	1104	1204	1304	1404	1504	1604	1704	1804
Fiveways	0914	1014	1114	1214	1314	1414	1514	1614	1714	1814
Littlesea Holiday Park	0922	1022	1122	1222	1322	1422	1522	1622	1722	1822

high season timetable

dates in yellow

Littlesea Holiday Park	0900	0930	1000	then	30	00	until	1800
Fiveways	0908	0938	1008	at	38	08		1808
Weymouth King's Statue K7	0921	0951	1021		51	21		1821

Weymouth King's Statue K7	0930	1000	1030	then	00	30	until	1830
Weymouth rail station	0934	1004	1034	at	04	34		1834
Fiveways	0944	1014	1044		14	44		1844
Littlesea Holiday Park	0952	1022	1052		22	52		1852

low season timetable



13

dates in blue

Waterside Holiday Park & Spa	0930	1030	1130	1230	1330	1430	1530	1630	1730	1830
Bowleaze Cove Reception	0935	1035	1135	1235	1335	1435	1535	1635	1735	1835
Weymouth King's Statue K8	0947	1047	1147	1247	1347	1447	1547	1647	1747	1847

Weymouth King's Statue K8	0900	1000	1100	1200	1300	1400	1500	1600	1700	1800
Bowleaze Cove Reception	0912	1012	1112	1212	1312	1412	1512	1612	1712	1812
Waterside Holiday Park & Spa	0917	1017	1117	1217	1317	1417	1517	1617	1717	1817

high season timetable

dates in yellow

Waterside Holiday Park & Spa	0930	1000	1030	then	00	30	until	1830
Bowleaze Cove Reception	0935	1005	1035	at	05	35		1835
Weymouth King's Statue K8	0947	1017	1047		17	47		1847

Weymouth King's Statue K8	0930	1000	1030	then	00	30	until	1800
Bowleaze Cove Reception	0942	1012	1042	at	12	42		1812
Waterside Holiday Park & Spa	0947	1017	1047		17	47		1817

for later buses to
Littlesea Holiday Park
use route 8

see map & timetables
on pages 35-37

	Mon	Tue	Wed	Thu	Fri	Sat	Sun
Apr	1	2	3	4	5	6	7
	8	9	10	11	12	13	14
	15	16	17	18	19	20	21
	22	23	24	25	26	27	28
	29	30					

May		1	2	3	4	5	
	6	7	8	9	10	11	12
	13	14	15	16	17	18	19
	20	21	22	23	24	25	26
	27	28	29	30	31		

Jun						1	2
	3	4	5	6	7	8	9
	10	11	12	13	14	15	16
	17	18	19	20	21	22	23
	24	25	26	27	28	29	30

Jul	1	2	3	4	5	6	7
	8	9	10	11	12	13	14
	15	16	17	18	19	20	21
	22	23	24	25	26	27	28
	29	30	31				

Aug			1	2	3	4	
	5	6	7	8	9	10	11
	12	13	14	15	16	17	18
	19	20	21	22	23	24	25
	26	27	28	29	30	31	

Sep							1
	2	3	4	5	6	7	8
	9	10	11	12	13	14	15
	16	17	18	19	20	21	22
	23	24	25	26	27	28	29
	30						

Oct		1	2	3	4	5	6
	7	8	9	10	11	12	13
	14	15	16	17	18	19	20
	21	22	23	24	25	26	27
	28	29	30	31			

Nov			1	2	3		
	5	6	7	8	9	10	
	11	12	13	14	15	16	17
	18	19	20	21	22	23	24
	25	26	27	28	29	30	

£15
all day

group day ticket

unlimited travel all day
for up to 5 people on
routes 12 and 13

£60
all week

group week ticket

unlimited travel all week
for up to 5 people on our
entire network

£15
all day

group day ticket

unlimited travel all day
for up to 5 people on
routes 12 and 13

£60
all week

group week ticket

unlimited travel all week
for up to 5 people on our
entire network



JURASSIC COASTER

adventures by bus



The glorious Dorset coastline that stretches all the way from Swanage in the east to beyond Lyme Regis in the west is spectacular, and is England's first natural World Heritage Site.

It has become known as the Jurassic Coastline due to the large number of fossils from the Jurassic Period - over 150 million years ago - found along its shoreline.

Jurassic Coaster buses are the best way to get out and explore these beautiful landscapes and the charming towns and villages along the way.

Use these timetables to plan where to go. Our go-as-you-please unlimited travel tickets are great value and allow you to stop off where you want as often as you like.

OPEN TOP BUS RIDE

Get a breath of fresh air on our open top X50 & X52 Jurassic Coasters. It's a great way of seeing some gorgeous scenery, too.

Journeys are highlighted in the following timetables.



towards **Bridport, Lyme Regis & Axminster****X51 X52 X53****Mondays to Fridays** except public holidays

	X53	X53	X53	X51	X53	X51	X52	X53	X51	X52	X53	X51	X52	X51	X53	X53	X52	X51	X53
Weymouth King's Statue			0657		0829	0914	0920	1011	1112	1116	1218	1314	1316	1322	1421	1421	1516	1519	1630
Dorchester Road Morrisons					0920				1117			1320		1328				1526	
Monkton Park					0928				1126			1330		1338				1534	
Dorchester South station				0753	0938				1135			1339		1347				1543	
Dorchester Trinity Street				0756	0941				1138			1343		1351				1547	
Dorset County Hospital				0801	0946				1143			1349		1357				1552	
Poundbury Queen Mother Square				0806	0951				1149			1354		1402				1558	
Martinstown Post Office				0814	0959				1157			1402		1410				1606	
Winterbourne Valley School				0821	1006				1204			1409		1418				1614	
Lee Lane				0835	1021				1219			1424		1433				1629	
Weymouth rail station		0658		0831		0922	1013		1118	1221			1318		1424	1425	1518		1633
Fiveways		0704		0838		0931	1023		1127	1231			1328		1435	1434	1528		1644
Chickerell Meadow Close		0709		0845		0938	1029		1134	1237			1334		1441	1441	1534		1650
Portesham King's Arms		0716		0853		0946	1038		1142	1246			1343		1449	1451	1543		1659
Abbotsbury Ilchester Arms		0721		0859		0953	1046		1149	1253			1349		1456	1456	1549		1705
Burton Bradstock Three Horseshoes		0736		0916		1011	1105		1207	1310			1407		1514	1511	1607		1722
West Bay George Hotel		0742		0925		1019	1116		1215	1320			1417		1523	1519	1616		1731
Bridport East Street															1536				
Colfox School grounds															1550				
Bridport West Street		0750	0841	0936	1032	1032	1132	1231	1228	1334	1434	1430	1446	1600	1532	1630	1639	1743	
Bridport Bus Station <i>arr</i>		0752	0843	0938	1033	1035	1134	1232	1231	1336	1436	1433	1448	1605	1537	1633	1640	1745	
Bridport bus station <i>dep</i>	0559	0639	0757	0848	0943	1038		1139	1237		1341	1441		1455	1609	1545		1645	1750
Chideock Bridge	0604	0644	0804	0857	0952	1049		1151	1248		1351	1451		1505	1620	1554		1656	1800
Morcombelake Ship Knapp	0608	0648	0808	0901	0957	1054		1156	1253		1357	1456		1510	1625	1600		1700	1804
Charmouth church	0613	0653	0815	0908	1005	1104		1206	1303		1405	1503		1519	1633	1608		1708	1811
Lyme Regis Square	0622	0702	0825	0923	1022	1122		1224	1321		1422	1520		1536	1649	1621		1723	1825
Woodroffe School	0627	0707	0830	0930	1031	1130		1231	1329		1429	1529		1545	1657	1629		1730	1832
Uplyme Talbot Arms	0629	0709	0833	0933	1033	1133		1234	1333		1432	1532		1548	1700	1632		1733	1834
Hunters Lodge Inn	0635	0715	0839	0939	1040	1139		1239	1339		1439	1538		1553	1706	1638		1740	1841
Axminster rail station	0645	0725	0850	0950	1052	1150		1251	1350		1451	1550		1604	1718	1650		1750	1851

guaranteed connection - the same bus runs through, so no need to change

evening journeys are on the next page

school days only

school holidays only


route X52 runs with open-top buses

we may occasionally have to use closed-top buses due to bad weather, or for operational reasons

£25
all day

group day ticket

unlimited travel all day for up to 5 people on Jurassic Coaster routes

JURASSIC COASTER


adventures by bus

towards **Bridport, Lyme Regis & Axminster****X51 X52 X53****Mondays to Fridays** except public holidays

	X53	X52	X51	X53	X51
Weymouth College	1700				
Weymouth King's Statue	1710	1716	1722	1820	
Dorchester Road Morrisons			1729		
Monkton Park			1739		
Dorchester South station			1747		1900
Dorchester Trinity Street			1750		1903
Dorset County Hospital			1755		1908
Poundbury Queen Mother Square			1800		1913
Martinstown Post Office			1807		1920
Winterbourne Valley School			1813		1927
Lee Lane			1828		1942
Weymouth rail station	1714	1718		1821	
Fiveways	1723	1730		1829	
Chickerell Meadow Close	1730	1736		1834	
Portesham King's Arms	1740	1744		1842	
Abbotsbury Ilchester Arms	1745	1750		1847	
Burton Bradstock Three Horseshoes	1800	1808		1903	
West Bay George Hotel	1806	1816		1910	
Bridport West Street	1814	1825	1834	1918	1948

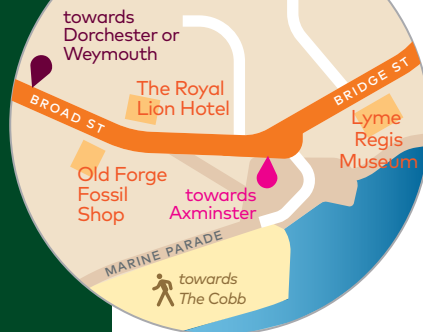
school days only

guaranteed connection -
the same bus runs through,
so no need to change

Bridport bus station arr	1816	1828	1835	1920	1949
Bridport bus station dep	1818		1840		1954
Chideock Bridge	1825		1848		2002
Morcombelake Ship Knapp	1829		1852		2006
Charmouth church	1834		1859		2013
Lyme Regis Square	1842		1913		2027
Woodroffe School	1847		1918		2032
Uplyme Talbot Arms	1850		1920		2034

Bridport bus station arr
Bridport bus station dep
Chideock Bridge
Morcombelake Ship Knapp
Charmouth church
Lyme Regis Square
Woodroffe School
Uplyme Talbot Arms

Lyme Regis



Lyme Regis

Loved by fossil hunters, Jane Austen fans (it featured in *Persuasion*) and admirers of the book and film *The French Lieutenant's Woman*, this most charming of seaside towns is an essential stop on the Jurassic Coast.

Walk out on to the Cobb, as the French Lieutenant's Woman did, to admire the sweep of the bay with tall cliffs disappearing into the distance, or discover the town's interesting independent shops, cafés and restaurants up the steep streets and down narrow alleyways.



adventures by bus

towards **Bridport, Dorchester & Weymouth****X51 X52 X53****Mondays to Fridays** except public holidays

	X53	X51	X53
Axminster rail station	1730	1815	1915
Hunters Lodge Inn	1738	1822	1922
Uplyme Talbot Arms	1743	1828	1927
Woodroffe School	1746	1830	1929
Lyme Regis Post Office	1752	1835	1934
Charmouth opp Church	1806	1849	1946
Morcombelake Ship Knapp	1813	1855	1953
Chideock Bridge	1817	1859	1957
Bridport bus station arr	1826	1907	2006
	▼	▼	▼
Bridport bus station dep	1831	1912	2011
Bridport West Street	1834	1915	2014
Lee Lane		1919	
Winterbourne Abbas opp Church		1933	
Martinstown Post Office		1939	
Poundbury Queen Mother Square		1946	
Dorset County Hospital Bridport Rd		1950	
Dorchester South rail station		1958	
Monkton Park		2007	
Dorchester Road Morrisons	▼	2015	▼
West Bay George Hotel	1845		2024
	▼		▼
	▼		▼
Burton Bradstock Anchor Inn	1851		2030
Abbotsbury Ilchester Arms	1906		2045
Portesham Kings Arms	1911		2051
Chickerell Meadow Close	1918		2058
Fiveways	1923	▼	2103
Weymouth King's Statue	1934	2025	2114

guaranteed connection -
the same bus runs through,
so no need to change

Chesil Beach

Pebbles on the long sweep of Chesil Beach have been graded in size by the pure work of nature.

Near Portland they can be potato-sized, but as you head west they gradually diminish to become as small as pea-sized at Bridport.

It is said that smugglers landing on the beach at night could judge their position on the coast simply by picking up a handful of shingle.



JURASSIC
COASTER

adventures by bus



towards **Bridport, Lyme Regis & Axminster****X51 X52 X53****Saturdays**

	X53	X53	X51	X53	X52	X51	X53	X51	X52	X53	X51	X52	X53	X52	X51	X53	X51	X52	X53	X51
Weymouth King's Statue		0638	0731	0828	0916	0923	1017	1115	1116	1220	1313	1316	1427	1516	1522	1626	1711	1716	1820	
Dorchester Road Morrisons			0737			0929		1121			1321				1529		1718			
Monkton Park			0745			0937		1130			1330				1538		1727			
Dorchester South Station			0754			0945		1139			1339				1547		1736			1900
Dorchester Trinity Street			0757			0948		1144			1342				1551		1740			1904
Dorset County Hospital			0801			0952		1148			1348				1556		1744			1908
Poundbury Queen Mother Square			0807			0958		1154			1353				1601		1749			1913
Martinstown Post Office			0815			1006		1202			1401				1609		1756			1920
Winterbourne Valley School			0822			1013		1209			1408				1616		1802			1926
Lee Lane			0837			1028		1224			1423				1631		1817			1941
Weymouth rail station	0640		0830	0918		1019		1118	1222		1318	1429	1518		1628		1718	1821		
Fiveways	0646		0836	0925		1028		1126	1232		1327	1438	1527		1637		1726	1829		
Chickerell Meadow Close	0653		0843	0931		1034		1133	1238		1334	1443	1533		1642		1732	1835		
Portesham King's Arms	0703		0853	0941		1043		1143	1247		1344	1453	1542		1652		1742	1844		
Abbotsbury Ilchester Arms	0709		0859	0948		1051		1149	1254		1350	1459	1549		1658		1748	1850		
Burton Bradstock Three Horseshoes	0727		0917	1005		1108		1207	1311		1409	1517	1607		1716		1805	1907		
West Bay George Hotel	0737		0928	1015		1119		1217	1322		1419	1527	1617		1726		1815	1915		
Bridport West Street	0749	0847	0941	1027	1039	1136	1236	1233	1335	1435	1435	1537	1629	1640	1736	1824	1826	1925	1948	
Bridport bus station arr	0750	0848	0943	1030	1040	1137	1237	1236	1337	1436	1438	1539	1632	1641	1738	1825	1828	1927	1949	

guaranteed connection - the same bus runs through, so no need to change

Bridport bus station dep	0655	0755	0853	0948	1045	1142	1242	1342	1441	1544	1646	1743	1830							
Chideock Bridge	0701	0804	0901	0957	1053	1153	1253	1353	1452	1554	1656	1753	1840							
Morcombelake Ship Knapp	0705	0808	0905	1001	1058	1158	1258	1357	1457	1559	1700	1758	1844							
Charmouth church	0713	0815	0913	1010	1108	1207	1307	1407	1506	1608	1709	1807	1853							
Lyme Regis Square	0726	0826	0926	1025	1125	1224	1323	1423	1522	1623	1724	1822	1907							
Woodroffe School	0732	0832	0932	1032	1131	1231	1331	1430	1530	1631	1730	1830	1914							
Uplyme Talbot Arms	0734	0834	0935	1034	1134	1234	1333	1433	1532	1634	1734	1833	1917							
Hunters Lodge Inn	0740	0840	0940	1040	1140	1240	1339	1439	1538	1640	1739	1839								
Axminster rail station	0750	0850	0950	1051	1150	1251	1350	1451	1549	1651	1750	1850								

route **X52** runs
with open-top buseswe may occasionally have to use closed-top buses
due to bad weather, or for operational reasons**JURASSIC
COASTER****adventures by bus****Axminster**

towards Dorchester & Weymouth

X51 X52 X53

Saturdays

	X51	X52	X53	X51	X52	X53	X51	X52	X53	X51	X52	X53	X51	X52	X53	X51	X53
Axminster rail station	0815	0915	1015	1115	1215	1315	1415	1515	1615	1715	1815	1915					
Hunters Lodge Inn	0822	0923	1024	1123	1223	1323	1423	1522	1622	1722	1821	1922					
Uplyme Talbot Arms	0829	0928	1029	1129	1229	1328	1429	1528	1628	1727	1827	1928					
Woodroffe School	0831	0931	1032	1132	1231	1331	1432	1530	1631	1730	1830	1930					
Lyme Regis Post Office	0838	0938	1039	1138	1238	1337	1439	1537	1637	1736	1835	1935					
Charmouth opp Church	0853	0953	1054	1152	1253	1352	1455	1551	1652	1752	1851	1951					
Morcombelake Ship Knapp	0902	1003	1103	1200	1301	1400	1503	1559	1700	1759	1858	1958					
Chideock Bridge	0908	1009	1110	1207	1307	1405	1509	1604	1704	1804	1903	2003					
Bridport bus station <i>arr</i>	0917	1019	1120	1217	1317	1414	1517	1613	1713	1812	1912	2012					
Bridport bus station <i>dep</i>	0922	0930	1024	1125	1222	1322	1329	1419	1522	1618	1718	1729	1817	1917	2017		
Bridport West Street	0927	0931	1028	1130	1130	1227	1326	1330	1422	1526	1530	1621	1722	1730	1820	1920	2020
Lee Lane	0934			1138			1334			1533			1729			1926	
Winterbourne Abbas opp Church	0950			1152			1349			1548			1744			1942	
Martinstown Post Office	0954			1156			1353			1552			1751			1946	
Poundbury Queen Mother Square	0958			1201			1358			1557			1758			1950	
Dorset County Hospital Bridport Rd	1003			1205			1402			1601			1802			1953	
Dorchester South station	1013			1215			1412			1611			1813			2001	
Monkton Park	1019			1221			1419			1617						2009	
Dorchester Road Morrisons	1027			1229			1427			1625						2017	
West Bay George Hotel		0943	1043		1145	1242		1345	1436		1544	1635		1742	1833		2033
Burton Bradstock Anchor Inn		0951	1051		1153	1249		1353	1444		1552	1643		1750	1841		2041
Abbotsbury Ilchester Arms		1009	1108		1211	1306		1410	1501		1610	1659		1807	1856		2057
Portesham Kings Arms		1016	1115		1217	1313		1417	1507		1616	1706		1813	1902		2103
Chickerell Meadow Close		1025	1125		1227	1322		1426	1516		1625	1714		1822	1910		2111
Fiveways		1031	1131		1232	1327		1431	1522		1631	1720		1827	1915		2116
Weymouth King's Statue	1039	1047	1145	1241	1248	1340	1441	1447	1535	1636	1646	1733	1840	1926	2027	2128	

▼ guaranteed connection - the same bus runs through, so no need to change

● these buses will wait up to 5 minutes for the connecting X52



☀ route X52 runs with open-top buses

we may occasionally have to use closed-top buses due to bad weather, or for operational reasons

JURASSIC COASTER

adventures by bus

towards **Bridport, Lyme Regis & Axminster****X51 X52 X53****Sundays & public holidays**

	X53	X51	X53	X51	X53	X51	X53	X51	X53	X51	X53	X53
Weymouth King's Statue	0739	0834	0930	1027	1124	1227	1324	1426	1530	1630	1820	
Dorchester Road Morrisons	0744		0935		1129		1330		1536			
Monkton Park	0752		0943		1137		1340		1545			
Dorchester South station	0802		0952		1147		1349		1554			
Dorchester Trinity Street	0804		0954		1150		1352		1557			
Dorset County Hospital	0808		0958		1154		1356		1602			
Poundbury Queen Mother Square	0813		1003		1159		1401		1606			
Martinstown Post Office	0820		1011		1207		1409		1613			
Winterbourne Valley School	0827		1018		1214		1416		1620			
Lee Lane	0842	▼	1033	▼	1229	▼	1431	▼	1635	▼	▼	▼
Weymouth rail station		0836		1029		1229		1428		1632	1822	
Fiveways		0843		1037		1237		1436		1639	1829	
Chickerell Meadow Close		0849		1043		1243		1442		1646	1835	
Portesham King's Arms		0857		1052		1252		1451		1655	1844	
Abbotsbury Ilchester Arms		0904		1059		1259		1458		1702	1850	
Burton Bradstock Three Horseshoes		0921		1117		1317		1516		1718	1907	
West Bay George Hotel		▼	0931	▼	1127	▼	1326	▼	1525	▼	1727	1916
Bridport West Street	0849	0942	1042	1138	1240	1338	1438	1537	1641	1737	1924	
Bridport bus station <i>arr</i>	0850	0944	1044	1141	1242	1340	1440	1539	1643	1740	1927	

guaranteed connection - the same bus runs through, so no need to change

Bridport bus station <i>dep</i>	0757	0855	0949	1049	1146	1247	1345	1445	1544	1648	1745	
Chideock Bridge	0803	0902	0957	1056	1155	1256	1354	1455	1553	1657	1754	
Morcombelake Ship Knapp	0807	0907	1002	1101	1200	1300	1359	1459	1558	1702	1759	
Charmouth church	0812	0914	1011	1110	1210	1309	1409	1509	1608	1711	1808	
Lyme Regis Square	0826	0925	1025	1125	1225	1324	1424	1525	1623	1726	1823	
Woodroffe School	0832	0932	1032	1132	1232	1331	1431	1532	1630	1732	1830	
Uplyme Talbot Arms	0835	0935	1034	1135	1234	1334	1434	1535	1633	1735	1833	
Hunters Lodge Inn	0840	0940	1040	1141	1240	1340	1440	1541	1639	1741		
Axminster rail station	0850	0950	1051	1151	1251	1350	1451	1551	1650	1751		



towards **Dorchester & Weymouth****X51 X52 X53****Sundays & public holidays**

	X51	X53	X51	X53	X51	X53	X51	X53	X51	X53	X51
Axminster rail station		0915	1015	1115	1215	1315	1415	1515	1615	1715	1815
Hunters Lodge Inn		0923	1022	1123	1223	1323	1423	1522	1623	1722	1822
Uplyme Talbot Arms	0828	0928	1027	1129	1229	1328	1428	1528	1628	1728	1828
Woodroffe School	0831	0931	1030	1131	1231	1331	1430	1531	1631	1731	1830
Lyme Regis Post Office	0835	0935	1034	1135	1235	1337	1434	1536	1637	1737	1836
Charmouth opp Church	0849	0949	1048	1149	1249	1352	1448	1551	1651	1751	1850
Morcombelake Ship Knapp	0856	0956	1055	1156	1257	1359	1456	1558	1659	1759	1858
Chideock Bridge	0901	1001	1100	1201	1302	1404	1501	1603	1703	1803	1903
Bridport bus station <i>arr</i>	0910	1010	1109	1211	1312	1413	1511	1612	1712	1812	1912
	▼	▼	▼	▼	▼	▼	▼	▼	▼	▼	▼
Bridport bus station <i>dep</i>	0915	1015	1114	1216	1317	1418	1516	1617	1717	1817	1917
Bridport West Street	0917	1018	1116	1219	1319	1420	1518	1619	1719	1819	1919
Lee Lane	0923		1122		1325		1524		1725		1924
Winterbourne Abbas opp Church	0940		1139		1340		1539		1740		1939
Martinstown Post Office	0947		1146		1347		1546		1747		1945
Poundbury Queen Mother Square	0955		1154		1355		1554		1754		1952
Dorset County Hospital Bridport Rd	0959		1158		1359		1557		1758		1956
Dorchester South station	1007		1208		1409		1607		1806		2004
Monkton Park	1014		1216		1416		1615		1814		2010
Dorchester Road Morrisons	1021	▼	1225	▼	1425	▼	1622	▼	1821	▼	2017
West Bay George Hotel		1032		1234		1434		1633		1831	
		▼		▼		▼		▼		▼	
		▼		▼		▼		▼		▼	
Burton Bradstock Anchor Inn		1040		1241		1442		1640		1839	
Abbotsbury Ilchester Arms		1057		1257		1459		1657		1855	
Portesham Kings Arms		1104		1303		1505		1703		1900	
Chickerell Meadow Close		1113		1312		1514		1711		1908	
Fiveways	▼	1119	▼	1317	▼	1519	▼	1716	▼	1913	▼
Weymouth King's Statue	1032	1131	1236	1329	1435	1531	1634	1727	1831	1924	2026

▼ guaranteed connection - the same bus runs through, so no need to change

Mondays to Saturdays & public holidays

	X54	X54	X50	X54	X50	X54	X50	X54	X50	X54	X50
Weymouth King's Statue	0715	0733	0833	0933	1033	1133	1233	1333	1433	1533	1633
Overcombe Corner	0722	0740	0840	0940	1040	1140	1240	1340	1440	1540	1640
Preston The Spice Ship	0729	0745	0845	0945	1045	1145	1245	1345	1445	1545	1645
Osmington Chapel Lane	0733	0749	0849	0949	1049	1149	1249	1349	1449	1549	1649
Warmwell Cross	0740	0756	0856	0956	1056	1156	1256	1356	1456	1556	1656
Winfrith Newburgh opp Post Office	0746	0802	0902	1002	1102	1202	1302	1402	1502	1602	1702
Durdle Door Park entrance	0752	0808	0908	1008	1108	1208	1308	1408	1508	1608	1708
Lulworth Cove	0759	0815	0915	1015	1115	1215	1315	1415	1515	1615	1715
West Lulworth Castle Inn	0803	0819	0919	1019	1119	1219	1319	1419	1519	1619	1719
Wool rail station <i>arr</i>	0816	0828	0930	1030	1130	1230	1330	1430	1530	1630	1730
Wool rail station <i>dep</i>	0818	0830	0932	1032	1132	1232	1332	1432	1532	1632	
Bovington Tank Museum			0940		1140				1540		
Monkey World			0948		1148		1348		1548		
Wool rail station			0955		1155		1355		1555		
Wareham Red Lion	0834	0844	1011	1046	1211	1246	1411	1446	1611	1646	
Wareham rail station	0838	0848	1016	1050	1216	1250	1416	1450	1616	1650	
Wareham Post Office			1020		1220		1420		1620		
Corfe Castle village centre			1032		1232		1432		1632		
Swanage bus station			1047		1247		1447		1647		

- this bus goes via Colliers Lane, Dorchester Road and also stops at Purbeck School bus park at 0830

school days only

Saturday & school hols only



route X50 runs with open-top buses

we may occasionally have to use closed-top buses due to bad weather, or for operational reasons

Sundays

	X50	X54	X50	X54	X50	X54	X50
Weymouth King's Statue	0805	0905	1005	1105	1205	1305	1405
Overcombe Corner	0812	0912	1012	1112	1212	1312	1412
Preston The Spice Ship	0817	0917	1017	1117	1217	1317	1417
Osmington Chapel Lane	0821	0921	1021	1121	1221	1321	1421
Warmwell Cross	0828	0928	1028	1128	1228	1328	1428
Winfrith Newburgh opp Post Office	0834	0934	1034	1134	1234	1334	1434
Durdle Door Park entrance	0840	0940	1040	1140	1240	1340	1440
Lulworth Cove	0847	0947	1047	1147	1247	1347	1447
West Lulworth Castle Inn	0851	0951	1051	1151	1251	1351	1451
Wool rail station <i>arr</i>	0902	1002	1102	1202	1302	1402	1502
Wool rail station <i>dep</i>	0904	1004	1104	1204	1304	1404	1504
Bovington Tank Museum	0912		1112		1312		1512
Monkey World	0920		1120		1320		1520
Wool rail station	0927		1127		1327		1527
Wareham Red Lion	0943	1018	1143	1218	1343	1418	1543
Wareham rail station	0948	1022	1148	1222	1348	1422	1548
Wareham Post Office	0952		1152		1352		1552
Corfe Castle village centre	1004		1204		1404		1604
Swanage bus station	1019		1219		1419		1619

towards **Weymouth****X50 X54****Mondays to Saturdays & public holidays**

	X54	X50	X54	X50	X54	X50	X54	X50	X54	X50
Swanage bus station			1125		1325			1525		1725
Corfe Castle village centre			1140		1340			1540		1740
Wareham Red Lion			1152		1352			1552		1752
Wareham rail station	0924	1124	1156	1324	1356	1457	1524	1556	1724	1756
Wareham Post Office	0928	1128	1200	1328	1400	1501	1528	1600	1728	1800
Wool rail station arr	0940	1140	1214	1340	1414	1520	1540	1614	1740	1814
Wool rail station dep	0942	1142	▼	1342	▼	1522	1542	▼	1742	▼
Bovington Tank Museum			1222		1422			1622		1822
Monkey World			1230		1430			1630		1830
Wool rail station	▼	1042	▼	1242	▼	1442	▼	1642	▼	1842
West Lulworth Castle Inn	0953	1053	1153	1253	1353	1453	1535	1553	1653	1753
Lulworth Cove	0957	1057	1157	1257	1357	1457	1539	1557	1657	1757
Durdle Door Park entrance	1003	1104	1203	1304	1403	1504	1545	1603	1704	1803
Winfrith Newburgh Post Office	1008	1110	1208	1310	1408	1510	1550	1608	1710	1808
Winfrith Red Lion	1014	1116	1214	1316	1414	1516	1556	1614	1716	1814
Osmington Chapel Lane	1021	1123	1221	1323	1421	1523	1603	1621	1723	1821
Preston The Spice Ship	1025	1127	1225	1327	1425	1527	1607	1625	1727	1825
Overcombe corner	1029	1132	1229	1332	1429	1532	1611	1629	1732	1829
Weymouth King's Statue	1039	1142	1239	1342	1439	1542	1621	1639	1742	1839

- this bus goes via Colliers Lane, Dorchester Road and also stops at Purbeck School bus park at 1510

school days only

Saturday & school hols only



route X50
runs with
open-top buses

we may occasionally have to use closed-top buses due to bad weather, or for operational reasons

Sundays

	X50	X50	X54	X50	X54	X50	X54	X50
Swanage bus station		1058		1258		1458		1658
Corfe Castle village centre		1113		1313		1513		1713
Wareham Red Lion		1125		1325		1525		1725
Wareham rail station	1129	1255	1329	1455	1529	1655	1729	
Wareham Post Office	1133	1259	1333	1459	1533	1659	1733	
Wool rail station arr	1147	1311	1347	1511	1547	1711	1747	
Wool rail station dep	▼	1315	▼	1515	▼	1715	▼	
Bovington Tank Museum		1155		1355		1555		1755
Monkey World		1203		1403		1603		1803
Wool rail station	1015	1215	▼	1415	▼	1615	▼	1815
West Lulworth Castle Inn	1026	1226	1326	1426	1526	1626	1726	1826
Lulworth Cove	1030	1230	1330	1430	1530	1630	1730	1830
Durdle Door Park entrance	1037	1237	1336	1437	1536	1637	1736	1837
Winfrith Newburgh Post Office	1043	1243	1341	1443	1541	1643	1741	1843
Winfrith Red Lion	1049	1249	1347	1449	1547	1649	1747	1849
Osmington Chapel Lane	1056	1256	1354	1456	1554	1656	1754	1856
Preston The Spice Ship	1100	1300	1358	1500	1558	1700	1758	1900
Overcombe corner	1105	1305	1402	1505	1602	1705	1802	1905
Weymouth King's Statue	1115	1315	1412	1515	1612	1715	1812	1915



customer services
0345 646 0707

firstbus.co.uk/wessex

 @firstdorset
 First Dorset

all information correct May 2024